

Power up your postcode

Train to teach in
a school near you.



Northamptonshire
Teaching School Hub

led by Brooke Weston Trust

T **Teach
First** | Training
Partner

Contents

3	Introduction
4	Classroom-based learning
4	Specialised training
5	Mentoring and support
5	The qualifications you'll receive
5	Expert course development
6	Core programme overview
7	Eligibility
8	Course accessibility
8	Personal qualities
9	Fees and financial support
9	How to apply
10	Find out more

Introduction

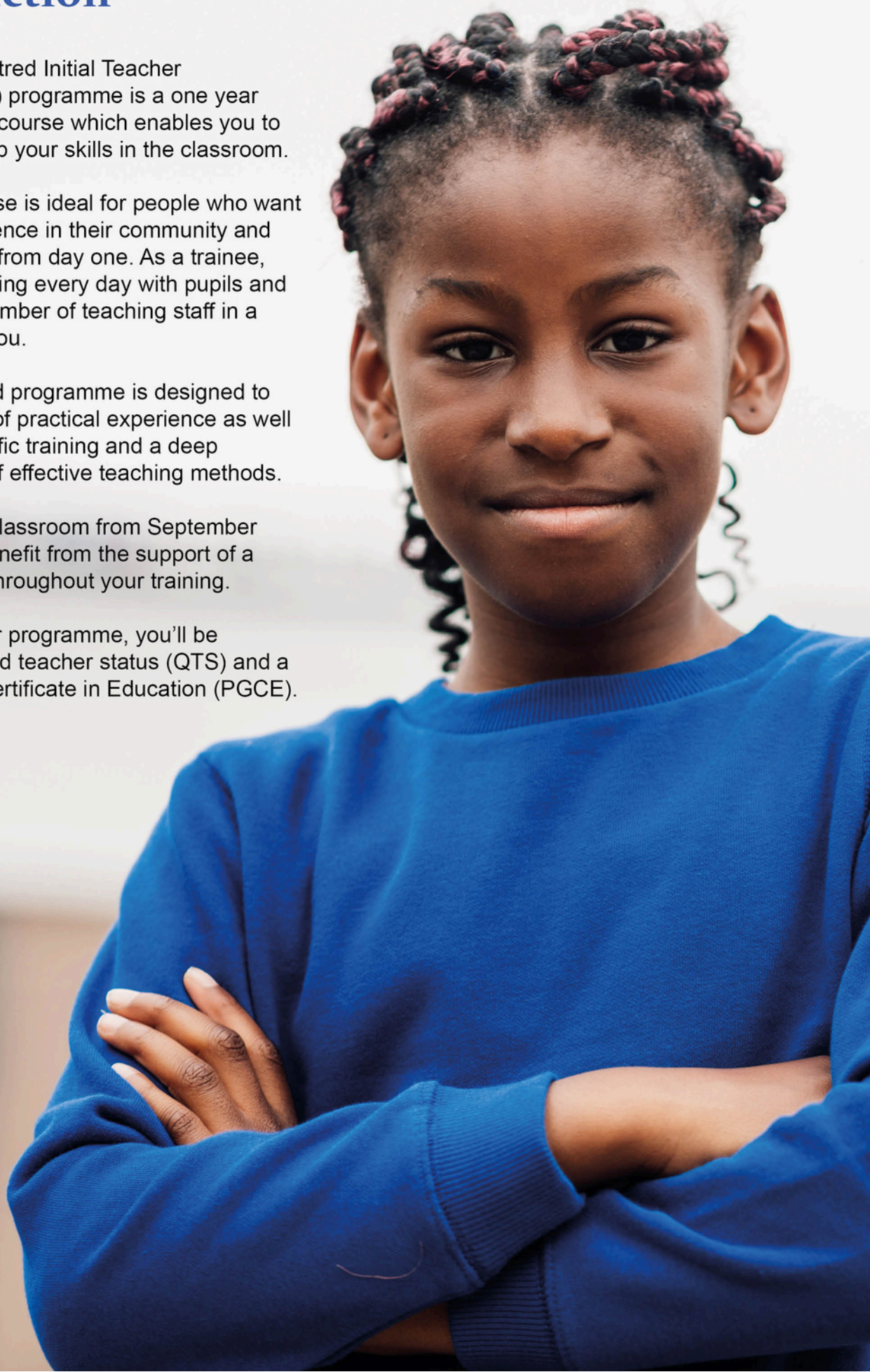
The School-Centred Initial Teacher Training (SCITT) programme is a one year teacher training course which enables you to train and develop your skills in the classroom.

Our SCITT course is ideal for people who want to make a difference in their community and learn on the job from day one. As a trainee, you'll be interacting every day with pupils and working as a member of teaching staff in a school local to you.

Our research-led programme is designed to give you plenty of practical experience as well as subject-specific training and a deep understanding of effective teaching methods.

You'll be in the classroom from September 2026 and will benefit from the support of a trained mentor throughout your training.

At the end of our programme, you'll be awarded qualified teacher status (QTS) and a Postgraduate Certificate in Education (PGCE).



Classroom-based learning

By choosing our programme, you will benefit from hands-on experience at two or more schools and learn from experienced teaching professionals.

Our curriculum focuses on supporting you to put learning into practice and places you in school from early September until the end of the summer term.

Our programme includes six weeks of placements in additional educational settings later in the year to make sure that you qualify with broad teaching experience.

Specialised training

Before you enter the classroom, we'll give you two weeks of intensive training focused on core areas such as behaviour management and planning. You will also have a further two separate weeks of intensive training later in the year.

Once you start your placement, you will have weekly training sessions, designed by Teach First's expert curriculum designers, and sequenced to ensure focus on the areas of teaching that are most relevant to that point in the academic year.

You will take part in six modules across the year - one per half term. In each module you will have self-directed study sessions, live seminars and time to collaborate with other trainees within your delivery partner hub.

Your self-directed study session will cover a comprehensive range of topics:

- Subject knowledge and pedagogy.
- An inclusive classroom environment.
- Effective and inclusive teaching.
- Planning and curriculum.
- Effective assessment.

Live seminars will be held for each module and are tailored to whether you are specialising in early primary, primary or secondary education. Each module will also include a full day conference which will focus on a combination of core curriculum and subject or phase-specific content. The conferences also provide a great opportunity to meet other trainees on the programme.

Subjects offered can vary. Please check our website for details of courses available in your area.

Mentoring and support

You'll be eased into teaching by shadowing expert teachers, before leading your own lessons with guidance from experienced colleagues. You'll work with a skilled and knowledgeable subject-specific mentor who will meet with you for 90 minutes every week to give you guidance. Your lead mentor will deliver your training and oversee your progress throughout the year.

Your mentors also receive support and training from Teach First and us to ensure that they are briefed on the latest research and can tailor their coaching to suit your needs.

The qualifications you'll receive

When you complete your training, you'll be awarded qualified teacher status (QTS) by Teach First.

You'll also achieve your Postgraduate Certificate in Education (PGCE) from Teach First's partner university, Sheffield Hallam University, meaning you'll have a 60 credit Master's level certificate in the study of education.

Expert course development

We're working in partnership with Teach First to develop and deliver this high-quality programme.

Teach First have worked with a range of educational experts and school leaders to develop our research-led programme.

With 20 years' experience as the largest Initial Teacher Training provider in the country, Teach First are committed to helping all teachers reach their potential and have the greatest impact possible on the pupils they teach.

Teach First's Initial Teacher Training was recently inspected by Ofsted and has again been rated outstanding in all areas.

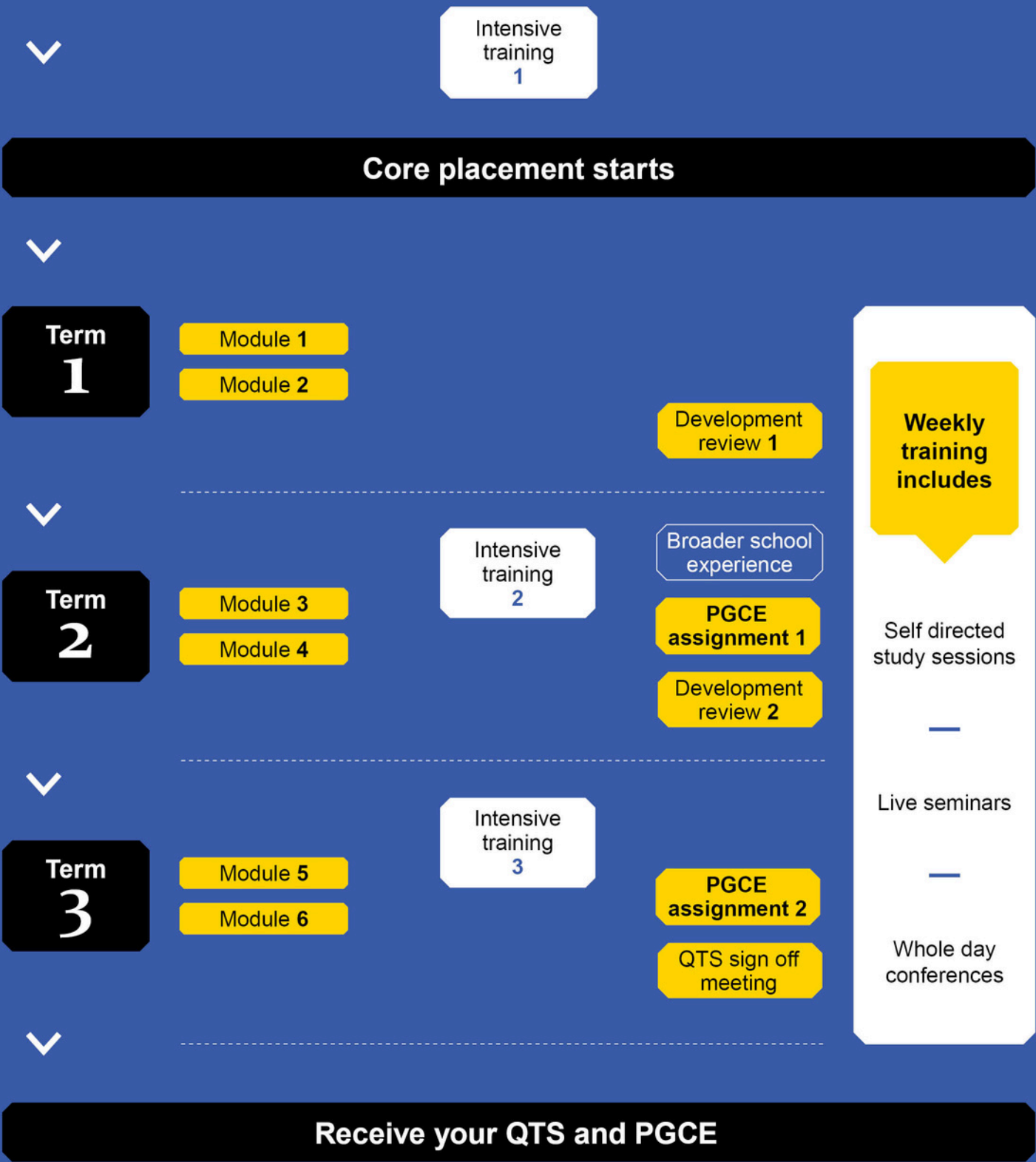
The logo features three stylized orange figures above the word "Ofsted" in white. Below "Ofsted" is the text "Outstanding Provider" in white.

Ofsted
**Outstanding
Provider**



Core programme overview

September 2026 - July 2027



Eligibility

To be eligible to apply you will need:

- an undergraduate degree, or equivalent
- to demonstrate sufficient knowledge in the subject you are applying to teach, either through your degree qualification, your A-levels or relevant experience
- Grade 4 (C) or above in English and maths GCSEs, or equivalent qualification. To teach primary, you will also need Grade 4 (C) or above in one science GCSE or equivalent

We will not consider candidates with pending GCSEs. Functional skills qualifications are not equivalent to maths and English GCSEs.

We accept most equivalency test providers. You will need to have passed your GCSE equivalency test before applying to our programme; we will not be able to process your application until you have passed.

Overseas qualifications will be reviewed by the UK national agency for international qualifications and skills (ENIC) to ensure they meet programme requirements.

International candidates

You'll need the right to study in the UK. You already have this if, for example, you:

- are an Irish citizen
- have settled or pre-settled status under the EU Settlement Scheme (you may still be able to apply)
- have indefinite leave to remain in the UK

If you do not already have the right to study in the UK, you may need to apply for a visa.

Sponsorship for a student visa is not available for this course.

Course accessibility

Equality, diversity and inclusion are fundamental to our programmes and partnerships. You will have access to our partner university's support services and we will take a tailored approach to all reasonable adjustments trainees may need. You will be able to apply to Student Finance for additional support dependent on eligibility, for example Disabled Students' Allowance.

Personal qualities

We work with teachers who are committed to pursuing and celebrating success for themselves and their pupils, as well as having a passion for their subject.

The PGCE is a challenging course and applicants need a wide range of skills, knowledge, experiences, and an aptitude for teaching. Forming relationships and good communication are key as well as being able to both problem solve independently and ask for support when needed. Not to mention tenacity and versatility to overcome any obstacles you may face.



Fees and financial support

The course fees for UK students in 2024 to 2025 were £9,250.

The tuition fees for UK/EU students are typically (full-time) £9,250 per year.

For international students, the fees are typically £10,950.

You will be registered as a full-time student throughout the programme so have access to lots of student benefits, as well as a student loan to cover your fees, subject to eligibility. Depending on your subject and qualifications, you may also be eligible for a bursary or grant to support you throughout your training.

We encourage potential applicants to check on the Department for Education's website to find out more about funding options.

<https://getintoteaching.education.gov.uk/funding-and-support>



How to apply

Visit www.gov.uk/apply-for-teacher-training and choose **Northamptonshire Teaching School Hub (1QM)** as a provider.

We'll then contact you directly with information about the next steps in the application process.

All offers are subject to satisfactory results from necessary pre-employment checks.

getintoteaching.education.gov.uk/funding-and-support



Find out more

Northamptonshire Teaching School Hub

✉ ITT@NorthantsTSHub.org

☎ (01536) 397013

💻 northamptonshireteachingschoolhub.org

🏠 Northamptonshire Teaching School Hub, (On the site of Brooke Weston Academy),
Coomb Road, Corby, Northants, NN18 8LA